

## Review Article

### Biology, medically importance and control of bed bug (*Cimex lectularius*) as pests of hospitals, dormitories, homes and hotels

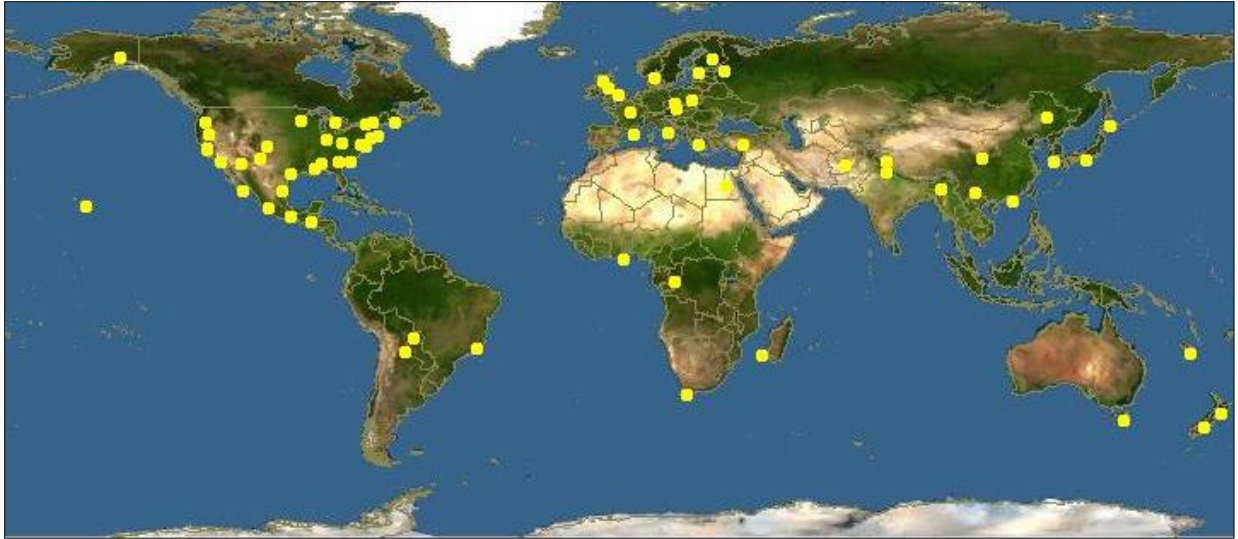
#### Abstract:

Bedbug (*Cimex lectularius*) is an important pest in living rooms including hospitals, dormitories, homes and hotels. All the nymphal and adult stage taking blood from human and other animals. They distributed all over the world. They travel from one country to others by travelling instruments. Bedbugs have been suspected of transmitting infectious agents. there is some evidence that arboviruses may be transmissible. There are several measures for control of bedbug including environmental management, using different WHO recommended insecticides. There are several reports of insecticide resistance in this species. Monitoring and mapping of insecticide resistance is an important measure for bedbug control for choosing appropriate insecticides.

**Keywords:** Bedbug, medically importance, control

#### Introduction

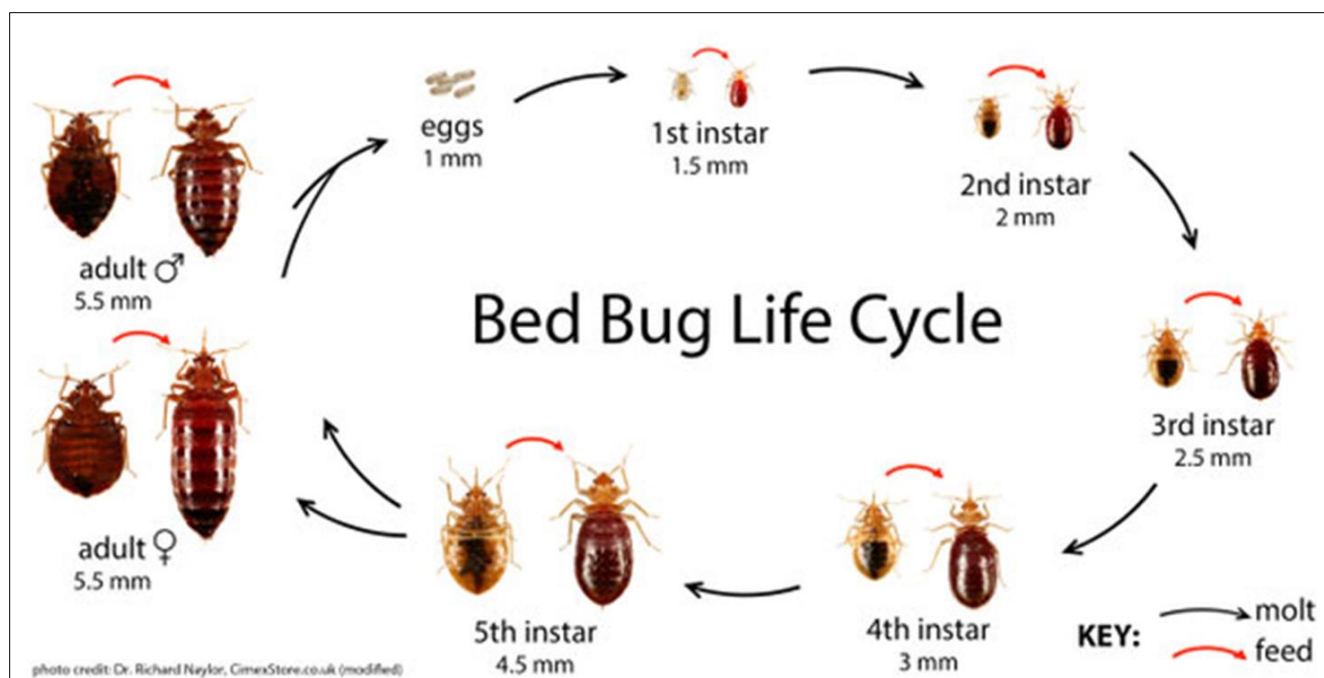
Bed bugs belong to order of Heteroptera and family Cimicidae. They affect many vertebrates. They have 23 genera, and around 91 species. Most common pest of humans is *Cimex lectularius*. All are dorsoventrally flattened. They are cosmopolitan in distribution (Fig.1). They are wingless, reddish brown bug - 5-8 mm in length, 3 pair of legs are thin and modified for running. Ocelli absent, antennae have 4-segmented , beak and tarsi have 3-segment. Beds bugs are cosmopolite insects. Isolated cases, clusters, or epidemics of bedbugs have been reported in most big cities on all continents [1, 2, 3]. Bedbugs can also travel longer distances by being transported by humans in clothing, luggage, or furniture [9-14].



**Fig.1. Global distribution of Bedbug (*Cimex lectularius*)**

**Bed bug biology:** Life cycle including: egg, 5 nymphal instars, and adults. All of them are obligate blood feeders. Nest ectoparasites (harborages within ~6' from host) (Fig.2).

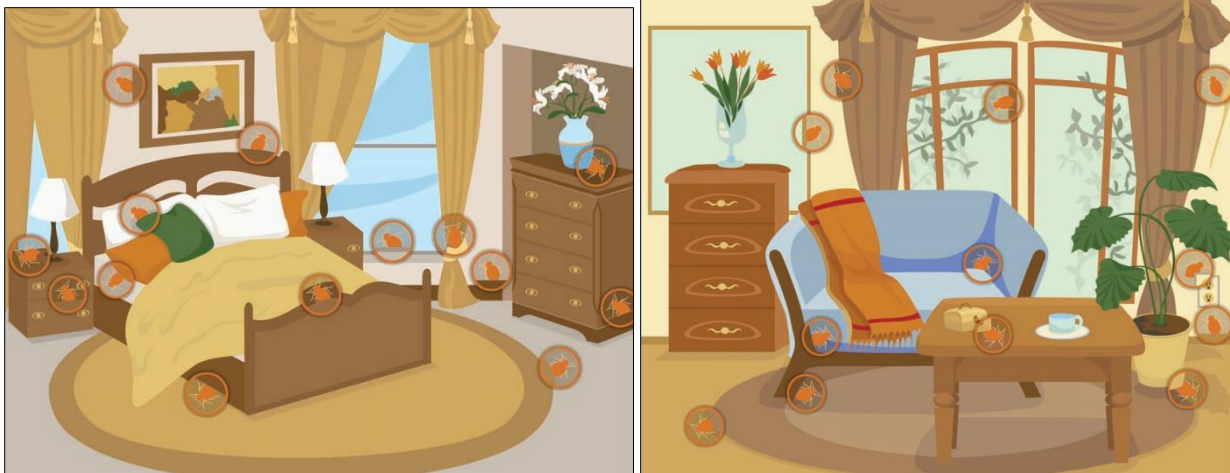




**Fig.2. Life cycle of bed bug (*Cimex lectularius*)**

Female produces up to 500 eggs. They can survive one year without blood meal. They hide during the day, active by night. They produce foul smelling substance when disturbed. Males are easily recognized by fang-like at the posterior end of abdomen. Copulation is by traumatic insemination. Females are identified by presence of Berles organ in the 4th abdominal segment. Lays 3 to 5 eggs a day. Total days from egg to adult is about 30 at 80.6° F. They have 5 molts from nymph to adult. They can live well over 6 months without feeding (some reports over 18 months). 1st instar nymph is about the size of a period at end of sentence. Eggs are 1-2 mm.

**Breeding and hiding places of bedbugs:** Bed bugs are found in homes, apartments, hotels, cruise ships, dormitories and shelter (Fig.3)



**Fig.3. Breeding places of Bedbug (*Cimex lectularius*)**

**Bedbug bites:** Bed bugs feed on blood as their only source of nutrition. In order to mature into adults, they must feed once during each of their immature stages. Adult females also need blood in order to produce eggs. Bedbugs do bite humans (Fig.4).



**Fig. 4. Bites of bedbug**

#### **Bedbug and transmission of diseases**

Bedbugs have been suspected of transmitting infectious agents; over 40 microorganisms have frequently been considered strong candidates including : *Bacillus anthracis* , *Bartonella quintana*, *Borrelia recurrentis* , *Borrelia duttoni* , *Brucella melitensis* *Midichloria mitochondrii* , *Coxiella burnetii* (Q fever) , *Francisella tularensis*, *Leptospira spp* ,*Mycobacterium leprae* , *Mycobacterium tuberculosis* , *Rickettsia africae* , *Rickettsia conorii* , *Rickettsia prowazekii* ,*Rickettsia rickettsii* ,*Rickettsia typhi* , *Salmonella typhi* ,*Staphylococcus aureus* , *Streptococcus pneumonia* , *Wolbachia spp* ,*Yersinia pestis* ,*Aspergillus flavus* , *Penicillium spp* , *Scopulariopsis spp* , Parasites (filariasis) ,*Brugia malayi* , *Wuchereria bancrofti* ,*Mansonella ozzardi* , *Onchocerca volvulus* ,*Leishmania braziliensis* ,*Leishmania donovani* ,*Leishmania tropica*,

*Plasmodium spp* ,*Trypanosoma cruzi* ,*Trypanosoma gambiense* , Hepatitis B,Hepatitis C,Human immunodeficiency , O'nyong-nyong , Polio, Rabies , Reovirus , Variola (smallpox) , and Yellow fever [4].

### **Control of Bedbug**

Checking and dismantling all furniture to access all bedbug hiding places, to identify and destroy eggs, nymphs, and adults [5]. Some methods can minimize the risk of infestation or expansion: regular inspections, hygiene procedures, and general education of the population. Complementary measures include modifying room temperature, destroying nearby bat or bird habitats, eliminating peeling paint and plaster, and caulking cracks and crevices in walls and furniture [5,6]. World Health Organization recommended the following insecticides including : Bendiocarb, Flufenoxuron, Methoprene, Chlorpyifos ,Malathion ,Pirimiphos-methyl,  $\alpha$ -Cypermethrin,  $\beta$ -Cyfluthrin, Bifenthrin ,Cyfluthrin ,Cypermethrin, Cyphenothrin, Deltamethrin, Lambdacyhalothrin, Permethrin, Diphenothrin, Resmethrin, Tetramethrin [7] .Insecticide resistance has been demonstrated experimentally and is an increasing problem [8]. Control of bedbugs consists of applying interior residual sprays or dusts to harbourages and to the surfaces over which the bedbugs crawl to reach the host [15-18]. Bed frames and slats, both wooden and metal, the welted seams and buttons of mattresses, cracks and crevices in walls and floors, door and window frames and joints in furniture should be treated [19,20].

### **Declaration**

**Ethics approval and consent to participate:** Not Applicable

**Consent to publish:** Applicable

**Availability of data and materials:** Applicable

### **References:**

[1].Paul J , Bates J . (200). Is infestation with the common bedbug increasing? , British Medical Journal. 320: 1141

- [2]. Doggett S , Greary M , Russell R . (2004) The resurgence of bed bugs in Australia . Journal Of Environmental Health. 4 : 30-38.
- [3]. Berenger JM , Delaunay P , Pagès F . (2008). Bedbugs (Heteroptera, Cimicidae): biting again. Médecine Tropicale. 68(6):563-7.
- [4]. Delaunay P, Blanc V, Giudice PD, Levy-Bencheton A, Chosidow O, Marty P, Brouqui P. (2011). Bedbugs and Infectious Diseases .Clinical Infectious Diseases.52( 2) : 200–210. <https://doi.org/10.1093/cid/ciq102>
- [5]. Doggett SL . (2007). A code of practice for the control of bed bug infestations in Australia , Second New South Wales, Australia Institute of Clinical Pathology & Medical Research & Australian Environmental Pest Managers Association, Westmead Hospital.
- [6]. Meek F. (2008). Ban bed bugs: how to prevent and identify infestations , Behaviour and Health Care . 28: 28-32.
- [7]. World Health Organization (WHO). (2006). Pesticides and their application for control of vectors and pests of public health importance . WHO, pp.125.
- [8] .Moore DJ , Miller DM . (2009). Field evaluations of insecticide treatment regimens for control of the common bed bug, *Cimex lectularius* (L.) , Pest Management Science. 65:332 - 338.
9. Lai O, Ho D, Glick S, Jagdeo J. Bed bugs and possible transmission of human pathogens: a systematic review. Archives of dermatological research. 2016 Oct;308:531-8.
10. Doggett SL. Bed bug ecology and control. Pests of Disease and Unease Synopsis of Papers. 2005 Apr 22:1-69.
11. Hwang SW, Svoboda TJ, De Jong IJ, Kabasele KJ, Gogosis E. Bed bug infestations in an urban environment. Emerging infectious diseases. 2005 Apr;11(4):533.
12. Goddard J, deshazo R. Bed bugs (*Cimex lectularius*) and clinical consequences of their bites. Jama. 2009 Apr 1;301(13):1358-66.

13. Vaidyanathan R, Feldlaufer MF. Bed bug detection: current technologies and future directions. *The American journal of tropical medicine and hygiene*. 2013 Apr 4;88(4):619.
14. Koganemaru R, Miller DM. The bed bug problem: past, present, and future control methods. *Pesticide biochemistry and physiology*. 2013 Jul 1;106(3):177-89.
15. Fung EH, Wong H, Chiu SW, Hui JH, Lam HM, Chung RY, Wong SY, Chan SM. Crowded Household, Subdivided Flats, and Dilapidated Housing Are Risk Factors of Bedbug (*Cimex lectularius* and *Cimex hemipterus*) Infestation: a Cross-sectional Study of Hong Kong Households. *Research Square Preprint*. 2020 Nov 3:1-29.
16. Oduola AO, Omotayo AI, Adelaja OJ, Obembe A. Bedbug (*Cimex lectularius*) infestation and its control practices in two selected settlements in Ilorin, Kwara State, Nigeria. *Animal Research International*. 2017;14(3):2818-25.
17. Dehghani R, Hashemi A, Takhtfiroozeh SM, Chimehi E, Chimehi E. Bed bug (*Cimex lectularis*) outbreak: A cross-sectional study in Polour, Iran. *Iranian Journal of Dermatology*. 2016 Jan 1;19(1):16-20.
18. Ameen KA. The First Study on Prevalence of Bed bug in Iraq-Kurdistan region: A warning message. *Tikrit Journal of Pure Science*. 2019 Apr 15;24(2):5-9.
19. Akhoundi M, Zumelzu C, Sereno D, Marteau A, Brun S, Jan J, Izri A. Bed bugs (Hemiptera, Cimicidae): a global challenge for public health and control management. *Diagnostics*. 2023 Jul 5;13(13):2281.
20. RIABI A, RAMEZANI H. A Case Study of Bedbug Infestation in the Student Dormitories of Iran-2018. *Journal of Clinical & Diagnostic Research*. 2019 Oct 1;13(10).