

# Development and Demonstration of a Manually Operated Sugarcane Mother Shoot Cutter

## Abstract

India has the second highest area under sugarcane cultivation next to Brazil. Sugarcane is cultivated in an area of 4.7 million ha with productivity of 72 tonnes/ha. Sustainable Sugarcane Initiative (SSI) is one of the methods of sugarcane cultivation technique that involves, use of less input like seed, water, land, labour and optimum utilization of fertilizers to achieve maximum yield. Removing the mother shoot is one of the main principles of Sugarcane Sustainable Initiative to get even tillers, increase more number of tillers and millable canes per plant. Conventional tool of secateurs, knives and sickles are not popular because the agricultural laborers need to bend down and hold the stem to remove the mother shoot of sugarcane. Probability is more for injuring the hands and eyes and also has more drudgery. Hence, sugarcane mother shoot cutter was developed with components of main conduit pipe, secateurs, operating lever, handle and grip handle. It was evaluated and demonstrated to the benefits sugarcane farmers. It can be operated manually in standing posture with less effort, due to 0.8 kg weight. It will reduce cost of cultivation and human drudgery. The tool cuts 800 shoots/hour. It saves 16 per cent and 19 per cent time and cost respectively. The overall dimensions of the tool is 950x320x270 and cost is Rs. 720/-.

key words: sugarcane-, mother shoot, cutter, SSI

Comment [mm1]: ?

Comment [mm2]: On abstract: please add introduction, prolems, aims, methods, results, and novelty

Comment [mm3]: Add into 5 keywords. Arranged in alphabetic

Formatted: Numbered + Level: 1 + Numbering Style: 1, 2, 3, ... + Start at: 1 + Alignment: Left + Aligned at: 0.63 cm + Indent at: 1.27 cm

## 1. INTRODUCTION

Sugarcane is cultivated in over 115 tropical and subtropical countries worldwide, covering an area of 26.54 million hectares with an average productivity of 71 tonnes per hectare. India ranks second in the world in terms of sugarcane acreage, following Brazil. In India, sugarcane is grown across 4.5 million hectares, with an average yield of approximately 79 tonnes per hectare. The sugarcane industry supports about 0.5 million workers in sugar mills, along with 7.5 million farmers, and provides employment to a significant number of agricultural laborers involved in cultivation and related activities, making up around 7.5% of the rural population (Singh et al., 2020; Shukla et al., 2017).

Tamil Nadu leads the country in sugarcane productivity, with an average yield exceeding 100 tonnes per hectare. However, the output-to-input ratio for sugarcane has been declining due to rising costs of seeds and labor, as well as productivity-related challenges. The Sugarcane Sustainable Initiative (SSI) is a method designed to optimize sugarcane production by using fewer setts, reducing water usage, and minimizing fertilizer and land requirements, thereby enhancing yields through better water, land, and labor productivity. One of the key practices in SSI is the removal of the mother shoot to promote uniform tillering. The plant should be cut approximately 25 mm above the ground once the sugarcane seedlings have been established (Biksham et al., 2009). This practice encourages the growth of additional tillers (Thirumurugan and Kavitha, 2020) and increases the number of millable canes per plant (Mani et al., 2017).

Traditionally, secateurs, knives, and sickles are used for cutting sugarcane mother shoots. However, these conventional tools are not widely adopted by farmers, as agricultural laborers must bend down, hold the stem and manually cut the mother shoot, which can be physically

demanding. The risk of injury to hands and eyes is higher when using these tools, due to sharp spines on the sugarcane stem or the serrated edges of the leaves. Additionally, backaches are common among agricultural laborers during the manual cutting process (Kathiresan, 2012; Kamaraj and Tajuddin, 2022). The physical strain associated with this task leads to lower productivity, and as a result, there is a growing need to reduce human labor and replace it with machines. Labor for cutting sugarcane is becoming increasingly scarce, as manual cutting is considered strenuous work. The shortage of labor is exacerbated by urbanization and industrialization, which further challenges sugarcane cultivation in India and, ultimately, impacts sugar production in the country (Intranot and Srithongchai, 1993).

In response to this challenge, a tool has been developed that allows for the cutting of sugarcane mother shoots while standing. This tool has been tested and demonstrated on college farms as well as in farmers' fields. The number of sugarcane mother shoots cut per hour using this tool was analyzed and compared to the efficiency of conventional methods.

## 2. MATERIALS AND METHODS

The tool is comprised of a main conduit pipe measuring 920 mm in length and 12 mm in internal diameter, along with secateurs, a handle, and a grip handle (Fig. 1). The top portion of the main conduit pipe is bent into an 'L' shape, forming the handle, which is 80 mm long and 12 mm in diameter. An 'L' shaped aluminum pipe, 130 mm in length and 12 mm in diameter, is hinged at the bottom of the handle to operate a wire (1.5 mm in diameter and 1000 mm long) that passes through a 6 mm plastic tube. This wire runs from the operating lever to the tail end of the secateurs. The left handle of the secateurs is clamped 120 mm from the bottom of the main pipe. A 15 mm diameter, 100 mm long mild steel rod is welded to the main pipe 200 mm from the top portion to serve as the grip handle, which is covered with a plastic tube. The front, side, and top views of the developed sugarcane mother shoot cutter are shown in Fig. 2.

Tests were conducted in actual sugarcane fields, 30 to 40 days after planting (DAP), to evaluate the performance of the developed tool and also demonstrated to the benefit of the farmers. The number of mother shoots cut by the tool was recorded after operating it for one hour in different districts of Tamil Nadu. The cost of the tool was determined, and the operational cost was calculated based on the specifications of the Bureau of Indian Standards. Using the collected data, the operational cost of removing the mother shoots for one hectare using the tool was compared to the costs associated with the conventional method.

## 3. RESULTS AND DISCUSSION

The manually operated sugarcane mother shoot cutter was developed according to the specifications outlined in Table 1. Field evaluations of the developed tool were conducted and demonstrated (Fig. 3) at six different locations, including four districts of Tamil Nadu, one month after planting the sugarcane (Anbumani et al., 2020). These evaluations took place at two Sugarcane Research Stations (Trichy and Cuddalore), one Krishi Vigyan Kendra (Dharmapuri), one TNAU farm (Coimbatore), and two farmers' fields (Trichy and Dharmapuri). The field observations are summarized in Table 2.

The tool can be operated in a standing posture, requiring minimal effort and reducing human drudgery. The developed tool and the conventional sickle were able to cut 800 shoots per hour and 670 shoots per hour, respectively (Fig. 4). The operational cost for the developed tool was Rs. 744 per hectare, while the conventional tool's cost was Rs. 884 per hectare. The overall dimensions of the tool are 950 x 320 x 270 mm, and its weight is 0.8 kg, making it easy for women to operate in a standing position without difficulty. The tool is lightweight, sturdy, and well-suited for small-scale manufacturing. The cost of the tool is Rs. 720.

**Formatted:** Numbered + Level: 1 + Numbering Style: 1, 2, 3, ... + Start at: 1 + Alignment: Left + Aligned at: 0.63 cm + Indent at: 1.27 cm

**Comment [mm4]:** On methods: add references on all parameters

**Comment [mm5]:** On discussion: Please add discussion for all parameters. Add references, explain the results from the others study, then compares with your study. Then placed discusiion before conclusion

**Formatted:** Numbered + Level: 1 + Numbering Style: 1, 2, 3, ... + Start at: 1 + Alignment: Left + Aligned at: 0.63 cm + Indent at: 1.27 cm

**Comment [mm6]:** Please add and explain discussion

**Comment [mm7]:** Please add and explain discussion

#### 4. CONCLUSIONS

This developed tool is used for removing sugarcane mother shoots, aligning with the key principles of the Sugarcane Sustainable Initiative (SSI) to promote uniform tillering and increase the number of tillers per plant. It is portable and can be operated in a standing posture, making it ideal for use in SSI cultivation. The tool helps minimize the risk of injuries to the hands and eyes during the cutting process. Lightweight, durable, and user-friendly, the tool is also easy to manufacture. Compared to conventional tools, it reduces time and costs by 16% and 19%, respectively.

#### COMPLIANCE WITH ETHICAL STANDARDS

**Ethical issues:** None

#### REFERENCES

- Anbumani S, Sivakumar C, Manickam S. Studies on sustainable sugarcane initiative (SSI) technology in north eastern agro climate zone of Tamil Nadu. *International Journal of Chemical Studies*. 2020;8(1):520-523.
- Biksham G, Loganandhan N, Goud VN, Agarwal M, Dalai S. Sustainable Sugarcane Initiative (SSI) Improving Sugarcane Cultivation in India, ICRISAT - WWF Project. 2009.
- Intranot K, Srithongchai S. Study of work strain of sugarcane cutters. *Agricultural Engineering Journal*. 1993; 1(1-2): 49.
- Kamaraj P, Tajuddin A. Development of lever operated sugarcane mother shoot cutter for Sustainable Sugarcane Initiative. *Madras Agricultural Journal (Journal of Current Crop Science and Technology)*. 2022;109(7-9):109-112. <https://doi.org/10.29321/MAJ.10.000668>.
- Kathiresan G. Labour saving tool for sugarcane cultivation. *The Hindu daily newspaper, Sci-Tech & Agri*, June 7. 2012.
- Mani G, Thirusenduraselvi D, Utharasu S. Sustainable Sugarcane Initiative (SSI) - The choicest method of sugarcane cultivation in India. *Everyman's Science*. 2017;12(3).
- Shukla SK, Sharma L, Awasthi SK, Pathak AD. Sugarcane in India (Package of Practices for Different Agro-climatic Zones). AICRP (S) Technical Bulletin 1. Lucknow: ICAR-Indian Institute of Sugarcane Research. 2017. p. 1-64.
- Singh AK, Verma AK, Triloki N, Singh SK. Glimpses of sugarcane cultivation. Lucknow: Directorate of Sugarcane Development, Government of India. 2020. p. 1-193.
- Thirukumaran K, Kavitha K. Impact of cane growth, yield and water productivity under Sustainable Sugarcane Initiative (SSI) technology. *International Journal of Current Microbiology and Applied Sciences*. 2020;9(4):2306-2310. <https://doi.org/10.20546/ijcmas.2020.904.276>.

**Table 1. Specifications of sugarcane mother shoot cutter**

S.No.	Particulars	Materials	Dimensions, mm
1	Conduit pipe	Mild steel	920x12
2	Secateurs	Steel casting	200x45x12
3	Operating wire	Steel rope	1000x1.5
4	Rod	Mild steel	100 x10
5	Lever	Aluminum	130x12
6	Handle grip	Mild steel	100x15

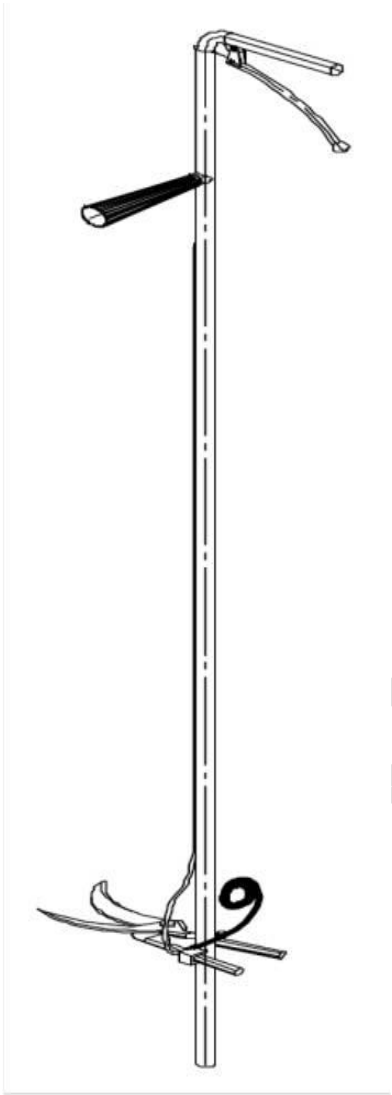
**Formatted:** Numbered + Level: 1 +  
Numbering Style: 1, 2, 3, ... + Start at:  
1 + Alignment: Left + Aligned at: 0.63  
cm + Indent at: 1.27 cm

**Comment [mm8]:** On references: add  
or change references using limited 5 years  
ago

7	Handle grip cover	Plastic	80x25
8	Spring	Hardened steel	50x1
9	Overall dimensions, mm	-	950x320x270
10	Weight, kg	0.8	

**Table 2. Field performance of sugarcane mother shoot cutter**

S. No.	Place	Days after planting (DAP)	No. of mother shoots cuts /h	
			Tool	Manual
1	SRS, Cuddalore (D1)	30	875	700
2	SRS, Trichy (D2)	32	785	680
3	KVK Dharmapuri (D3)	30	804	684
4	TNAU Coimbatore (D4)	35	815	668
5	Puvalur, Trichy (D5)	32	725	616
6	Ayyarkottai, Dharmapuri (D6)	40	795	675



**Fig. 1: Manually operated sugarcane mother shoot cutter**

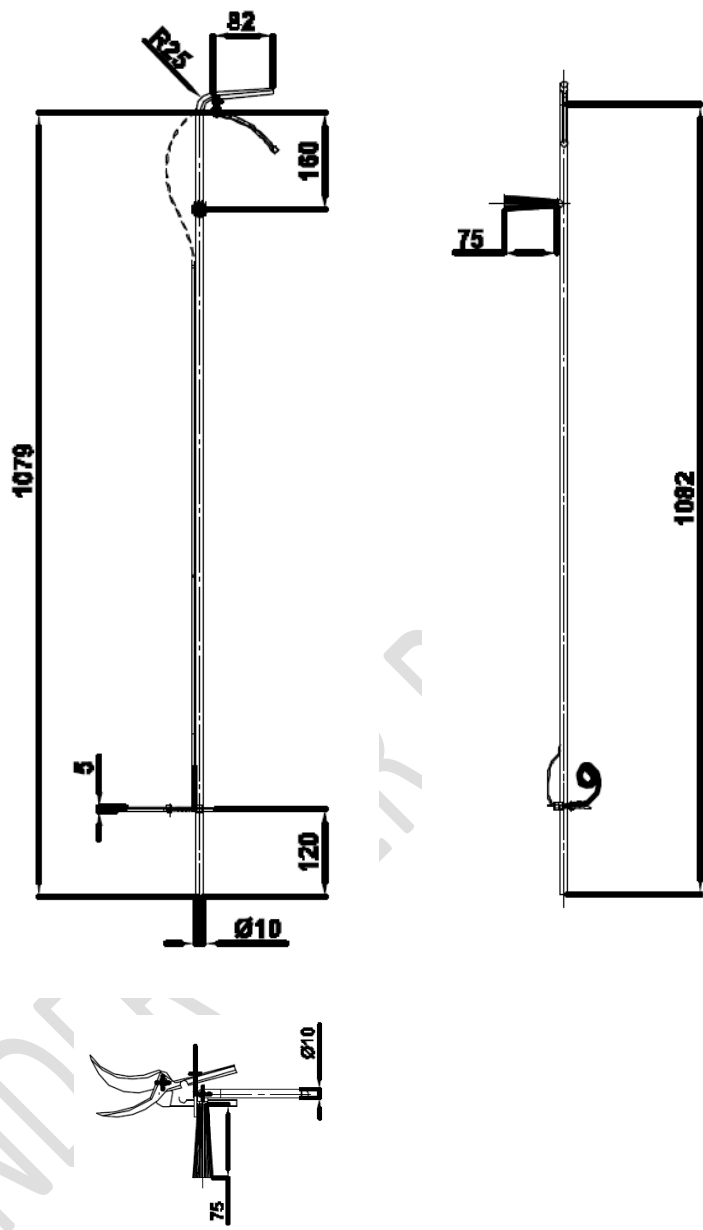
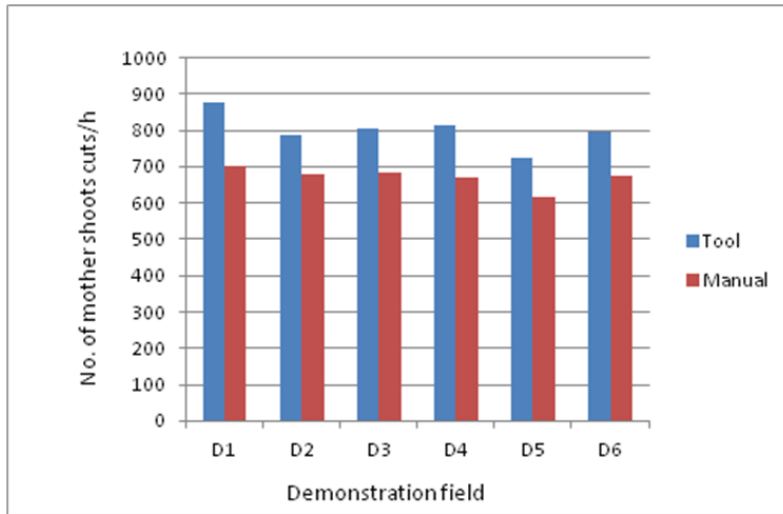


Fig.2: Manually operated sugarcane mother shoots cutter (2D)



**Fig. 3: Field demonstrations of sugarcane mother shoot cutter**



**Fig.4: Performance of sugarcane mother shoot cutter**

UNDER PEER REVIEW