

SEASONAL ABUNDANCE OF MAJOR INSECT PESTS and Natural Enemies OF CORIANDER AND THEIR RELATIONSHIP WITH BIOTIC AND ABIOTIC FACTORS

ABSTRACT

The experiment on “Bio-ecology and Management the seasonal abundance of major insect pests and natural enemies of coriander (*Coriandrum sativum* L.) in semi-arid region of Rajasthan” were conducted at Agronomy Farm and the Laboratory of the Department of Entomology, S.K.N. College of Agriculture, Jobner, Rajasthan, India during *Rabi*, 2021-22 and 2022-23. The aphid, *Hyadaphiscoriandri* and seed midge, *Systole albipennis* has have been recorded as major insect pests of coriander crops. The infestation of *H.coriandriaphid* and *S.albipennis* seed midge commenced in the second and last week of January, during both the years, respectively. The population of *H.coriandriaphid* and *S.albipennis* seed midge reached to its peak peaked in the fourth week of February and the third week of March, during both the years, respectively. The *H.coriandriaphid* population had a significant positive correlation ($r=0.65$) with maximum temperature during *Rabi*, 2022-23, whereas non-significant correlation with minimum temperature, average relative humidity, and the total rainfall during both the years. Seed damaged by *S.albipennis* seed midge showed a significant correlation with maximum temperature ($r= 0.99$ & $r= 0.71$), and minimum temperature ($r= 0.98$ & $r= 0.95$), whereas non-significant correlation with total rainfall during *Rabi*, 2021-22 and 2022-23, respectively. The population of *C. septempunctata* and *M. sexmaculatus* had showed a significant positive

correlation with coriander *H. coriandri* aphid and a non-significant correlation with *S. albipennis* seed midge during both the years.

Key words: *Coriandrum sativum*, *Hyadaphis coriandri*, *Systole albipennis*, Population, Germination, Temperature, Relative Humidity, Biotic and Abiotic Factors

INTRODUCTION

Coriander is one of the important winter season seed spice crops ~~belongs belonging to~~ the family Apiaceae (Umbelliferae), native ~~of to the~~ Mediterranean region. It is popularly known as “*Dhaniya*”. India is the largest producer, exporter, and consumer of coriander in the world. Coriander crop is extensively grown in the arid and semi-arid regions of India, covering an area of about 711.47 thousand ~~hectare hectares~~ with ~~the a~~ production of 947.76 thousand metric tonnes (Anonymous, 2021-22). In ~~the~~ India, Rajasthan and Gujrat states have emerged as seed spice bowl and together contribute more than 80 per cent of the total coriander production. In Rajasthan, it is cultivated in 103.58 thousand ~~hectares~~ area with an annual production of 135.81 thousand metric tonnes (Anonymous, 2021-22).

Insect pests are one of the major limiting factors ~~for~~ affecting the ~~quantitative quantity~~ and quality ~~production~~ of coriander. The insect pests viz., *Hyadaphis coriandri* (Das), *Systole albipennis* (Walker), *Bemisiatabaci* (Genn.), *Thrips tabaci* (Linn.), and *Petrobia latens* (Mullar) have been found infesting coriander crops (Meena *et al.*, 2017). Among the various insect pests, the coriander aphid, *H. coriandri* and seed midge, *S. albipennis* ~~has have~~ been reported as a regular and major pest of coriander in Rajasthan and other parts of the country. Both the nymphs and adults stage of *H. coriandri* cause qualitative and quantitative losses to seed yields by sucking cell sap from inflorescence/

umbels during February-March (Pareek *et al.*, 2013; ~~and~~ Meena *et al.*, 2017). If plant protection measures are not applied on time, it causes nearly 40-50 per cent yield losses (Meena *et al.*, 2016). It is well known that the attack of insect pests depends upon crop growth stage, climatic conditions, and the presence of natural enemies at a particular time. The interaction between biotic and abiotic factors helps during ~~predicative~~predictive models that in turn forecast the pest incidence.

MATERIAL AND METHODS

To study the seasonal abundance of major insect pests of coriander and their correlation with biotic and abiotic factors, coriander variety RCr-435 was sown in five plots separately and ~~allow~~allowed natural infestation of insect pests. The crop was sown on 16th November and 14th November, during two seasons *i.e.*, *Rabi*, 2021-22 and *Rabi*, 2022-23, respectively. The plot size was 3.0 x 2.0 m² with ~~row~~to-row and ~~plant to plant~~plant-to-plant distance distances of 30 cm and 10 cm, respectively. Geographically, Jobner is located at 75° 28' East longitude, 26° 06' North latitude, and at an elevation (altitude) of 427 meters above Mean Sea Level (MSL) in the Jaipur district of Rajasthan.

The population of ~~aphid~~aphids and their predators were counted on the whole plant in the early stage of the crop and later on, the population of ~~aphid~~*H. coriandri* was counted on three inflorescence/umbels from five randomly selected and tagged plants in each plot at weekly ~~interval~~intervals from appearance to the harvesting of the crop. The population of *H. coriandri* and natural enemies *viz.*, ladybird beetles ~~were~~was counted visually or by adding a magnifying lens.

The number of damaged seeds by seed midge was recorded on nine umbels (three umbels each from primary, secondary, and tertiary umbels) from each of the same five tagged plants. ~~Total~~The

Comment [mj1]: Use scientific name *H. coriandri* throughout the manuscript. There are many species of aphids. If you will use scientific name, it will increase the quality of the manuscript

Comment [mj2]: Use scientific name throughout

~~total~~ number of seed/ umbel and damaged ~~seed-seeds~~ was counted with the help of ~~a~~ magnifying lens. The appearance of ~~a~~ black spot or insect exit hole on the seeds ~~were-was~~ considered as damaged seed and per cent infestation was calculated.

The simple correlation was computed between the mean population of major insect pests, natural enemies, and weather parameters, viz., maximum and minimum temperatures, average relative humidity, and rainfall (Panse and Sukhatme, 1967). The correlation was also computed between weather parameters and ~~coccinellids-coccinellid~~ predators.

RESULTS AND DISCUSSION

~~Aphid, Hyadaphis coriandri~~

—The infestation of ~~coriander aphid, H. coriandrion~~ coriander crop commenced in the second week of January (2nd SMW) during both ~~the~~ years (0.2 Aphids per five plants during both the year), continued thereafter for a long period and reached ~~to its a~~ peak of 244.6 and 254.0 aphids per five plants in the fourth week of February (9th SMW) during *Rabi*, 2021-22 and 2022-23, respectively. After reaching the peak, the population of ~~aphid-aphids~~ started to decline and reached to low level in the second week of March during both the years. The current findings are in accordance with those of Pareek *et al.* (2013), Purtiet *al.* (2017), swami *et al.* (2018), and Choudhary *et al.* (2022) who ~~were~~ reported the incidence of aphid started ~~from-in~~ the second week of January to third week of February and the peak population of aphid from the first February to last week of March, which are in support of the present findings. The somewhat variation in commencement of incidence and peak period as reported by ~~the~~ above researchers might be due to the difference in agro-climatic conditions of the locality and time of sowing.

Comment [mj3]: After this add the methodology of recording the observations on natural enemies. You have written in abstract and results but not in the methodology.

The aphid population had non-significant correlation with maximum temperature ($r = 0.45$), minimum temperature ($r = 0.20$), average relative humidity ($r = -0.53$), and total rainfall ($r = -0.37$) during *Rabi*, 2021-22, whereas, significant positive correlation with maximum temperature ($r = 0.65$) and non-significant correlation with minimum temperature ($r = 0.49$), average relative humidity ($r = -0.60$) and total rainfall ($r = -0.16$) during *Rabi*, 2022-23. This indicated that the meteorological parameters ~~do not~~ affect the aphid population significantly during *Rabi*, 2021-22 and 2022-23, however, an increase in maximum temperature (up to 30-35 °C) results in a significant increase in the population of aphids ~~affect the aphid population significantly~~ during 2022-23. The present investigation findings on the association of aphid population with the abiotic factors ~~are~~ confirmed by the findings of Pareek *et al.* (2013), Purriet *al.* (2017), swami *et al.* (2018), Mamta (2020) and Choudhary *et al.* (2022) ~~those were who~~ reported that aphid population had a significant positive correlation with maximum temperature and non-significant correlation with minimum temperature, relative humidity, and total rainfall.

Seed midge, *Systole albipennis*

The incidence of ~~seed midge, *S. albipennis*~~ commenced in last week of January (5th SMW) during both the years, *i.e.*, *Rabi*, 2021-22 and 2022-25 (0.2 and 0.25 per cent seed damage per five plants, respectively) and reached to its peak in the third week of March (12th SMW) with 19.25 and 17.0 per cent seed damage per five plants during *Rabi*, 2021-22 and 2022-23, respectively and continued up to crop harvest. Patel and Patel (2003), Ram and Sharma (2015), Purriet *al.* (2018), and Mamta (2020) ~~were~~ reported that the incidence of seed midge started from the second week of December to the second week of February and peak population from the third week of March to Ssecond week of April, which, supports the present investigation.

The correlation matrix indicated that per cent seed damage by S. albipennis had a significant positive correlation with maximum temperature ($r= 0.99$ and $r= 0.71$), and minimum temperature ($r= 0.98$ and $r= 0.95$) whereas, and non- significant correlation with total rainfall ($r= -0.46$ and $r= -0.42$) during both ~~the~~ years, respectively. The per cent seed damage caused by seed midge had a significant positive correlation with average relative humidity ($r= -0.95$) during *Rabi*, 2021-22 whereas, non- significant correlation with average relative humidity ($r= -0.24$) during *Rabi*, 2022-23. These results are in agreement with those of Ram and Sharma (2015) and Shewale and Boad (2020) who reported the per cent seed damage had a positive significant correlation with maximum temperature, minimum temperature, and relative humidity and non- significant correlation with total rainfall. Purriet *al.* (2018) reported a significant correlation between seed midge damage and maximum temperature and non-significant with minimum temperature, relative humidity, and rainfall ~~supports supporting~~ the present finding.

Coccinella septempunctata

The population of *C. septempunctata* commenced in the third week of January (3rd SMW) during both ~~the~~ years, *i.e.*, *Rabi*, 2021-22 and 2022-23 (0.2 population per five plants in each year), continued thereafter for a long period and reached to its peak in fourth week of February (9th SMW) with 12.2 and 14.8 coccinellid per five plants during *Rabi*, 2021-22 and 2022-23, respectively. After reaching the peak, the population of *C. septempunctata* started to decline and reached to low level in the second week of March during both the years. The present ~~finding- findings are in conformity are alike~~ with those of Pareek *et al.* (2013), Swami *et al.* (2018), and Mamta (2020) who reported that the population of *C. septempunctata* started in the last week of January to the last week of February and reached to its peak in the third and fourth week of February

and thereafter its population started [a](#) decline.

Menochilus sexmaculatus

The population of *M. sexmaculatus* commenced in [the](#) fourth week of January (4th SMW) during both ~~the~~-years, *i.e.*, *Rabi*, 2021-22 and 2022-23 (0.2 population per five plants in each year), and continued thereafter for a long period and reached to its peak in fourth week of February (9th SMW) with 3.6 and 3.8 coccinellid per five plants during *Rabi*, 2021-22 and 2022-23, respectively. After reaching the peak, the population of *M. sexmaculatus* started to decline and reached to low level in the second week of March during both the years. Pareek *et al.* (2013) who were reported that the population of *M. sexmaculatus* ~~were~~-appeared in [the](#) first week of February and reached ~~at a~~ peak in [the](#) last week of February and after [a](#) decline which ~~are is~~agreement with [the](#) present investigation.

The correlation studies revealed that the population of *C. septempunctata* and *M. sexmaculatus* had showed [a](#) significant positive correlation with coriander aphid, *H. coriandri* and [a](#) non-significant correlation with seed midge, *S. albipennis* during *Rabi*, 2021-22 and 2022-23, respectively.

[Add conclusion section](#)

DISCLAIMER-DISCLAIMER(ARTIFICIAL INTELLIGENCE)

Authors hereby declare that no generative AI technologies such as large language models and text-to-image generators have been used during [the](#) writing or editing of manuscripts.

COMPETING INTERESTS

No Competing interest

REFERENCES

- Anonymous. Second advance estimates of area and production of horticulture crops. Ministry of Agriculture and farmer welfare.2021-22.
- Choudhary R, Deshwal HL, Ram B, Chand A. Seasonal incidence of *Hyadaphiscoriandari* on fennel and their correlation with biotic and abiotic factors. The Pharma Innovation Journal. 2022;11(2):728-731.
- Mamta. Seasonal Abundance and Management of Major Insect Pests of Coriander, *Coriandrum sativum* (Linn.) Through Biorational Approaches. M.Sc. (Ag.) Thesis submitted to SKNAU, Jobner.2020.
- Meena NK, Lal G, Meena RS, Harisha CB, Meena SR. Pest scenario of coriander (*Coriandrum sativum* L.) and population dynamics in semi-arid region of Rajasthan. International Journal of Tropical Agriculture.2017;35(4):779-783.
- Meena NK, Singh B, Lal G, Kant K, Meena RD. Sustainable management of aphid in coriander (*Coriandrum sativum* L.) through botanicals and bio-pesticides. International Journal of Seed Spices.2016;6(1):25-31.
- Panse VG, Sukhatme PV. Statistical Methods for Agricultural Workers. ICAR, New Delhi.1967;152-160.
- Pareek RK, Sharma A, Kumawat KC. Seasonal abundance of insect pests and their major natural enemies in coriander, *Coriander sativum* (Linn.).Indian Journal of Applied Entomology.2013;27(1):21-26.
- Patel AJ, Patel GM. Infestation of seed midge (*Systole albipennis*) in fennel (*Foeniculum vulgare* Mill.). Indian Journal of Applied Entomology.2003;17:161-162.

- Purti, Rinku, Anuradha. Correlation between the Incidence coriander aphids(*HyadaphisCoriandri* Das), their natural Enemies (coccinellids) and abiotic factors of the environment. Chemical Science Review and Letters.2017;6(23):1745-1749.
- Purti, Rinku, Malik VS. Correlation between the incidence of *Systole albipennis* and abiotic factors of the environment. Journal of Entomology and Zoology Studies.2018;6:903-905.
- Ram N, Sharma A. Seasonal incidence of seed midge, *Systole albipennis* Walker infesting fennel. Indian Journal of Ecological. 2015;42(2):555-556.
- Shewale CP, Borad PK. Population dynamics of major insect pests infesting fennel (*Foeniculum vulgare* L.). Journal of Entomology and Zoology Studies. 2020;8(5):2367-2372.
- Swami D, Jat BL,Dotasara SK. Population dynamics of insect pests of coriander and their correlation with biotic and abiotic factors. Journal of Entomology and Zoology Studies. 2018;6(4):460-464.

Table-1 Seasonal abundance of major insect pests of coriander and their natural enemies in the relation to weather parameters during Rabi, 2021-2022

S. No.	SMW *	Date of observation	Temperature °C (Maximum)	Temperature °C (Minimum)	Average RH (%)	Total Rainfall (mm)	Aphids / five plants	<i>Coccinella Septempunctata</i> /Five plants	<i>Menochilus sexmaculatus</i> /Five Plants	Seed Damage (%) by Seed midge / Five plants
1	2	10.01.2022	17.3	4.5	69	31.6	0.2	0.0	0.0	-
2	3	17.01.2022	18.9	3.9	65	0.0	3.4	0.2	0.0	-
3	4	24.01.2022	18.9	3.4	66	0.0	19.6	0.4	0.2	-
4	5	31.01.2022	23.5	4.1	61	0.0	56.2	1.6	0.4	0.20
5	6	07.02.2022	23.5	5.1	58	1.5	120.0	2.4	1.0	0.90
6	7	14.02.2022	26.3	4.7	50	0.0	167.4	5.4	1.4	4.50
7	8	21.02.2022	29.0	7.4	51	0.0	207.0	7.8	2.2	7.25
8	9	28.02.2022	30.1	8.0	49	0.0	244.6	12.2	3.6	9.23

9	10	07.03.2022	31.6	9.8	50	0.0	126.	7.2	2.0	11.50
							0			
1	11	14.03.2022	36.5	12.7	41	0.0	10.2	0.6	0.4	14.90
0										
1	12	21.03.2022	38.1	15.2	38	0.0	-	-	-	19.25
1										

Comment [mj4]: Delete this column. It is unnecessary

*Standard Meteorological Week

UNDER PEER REVIEW

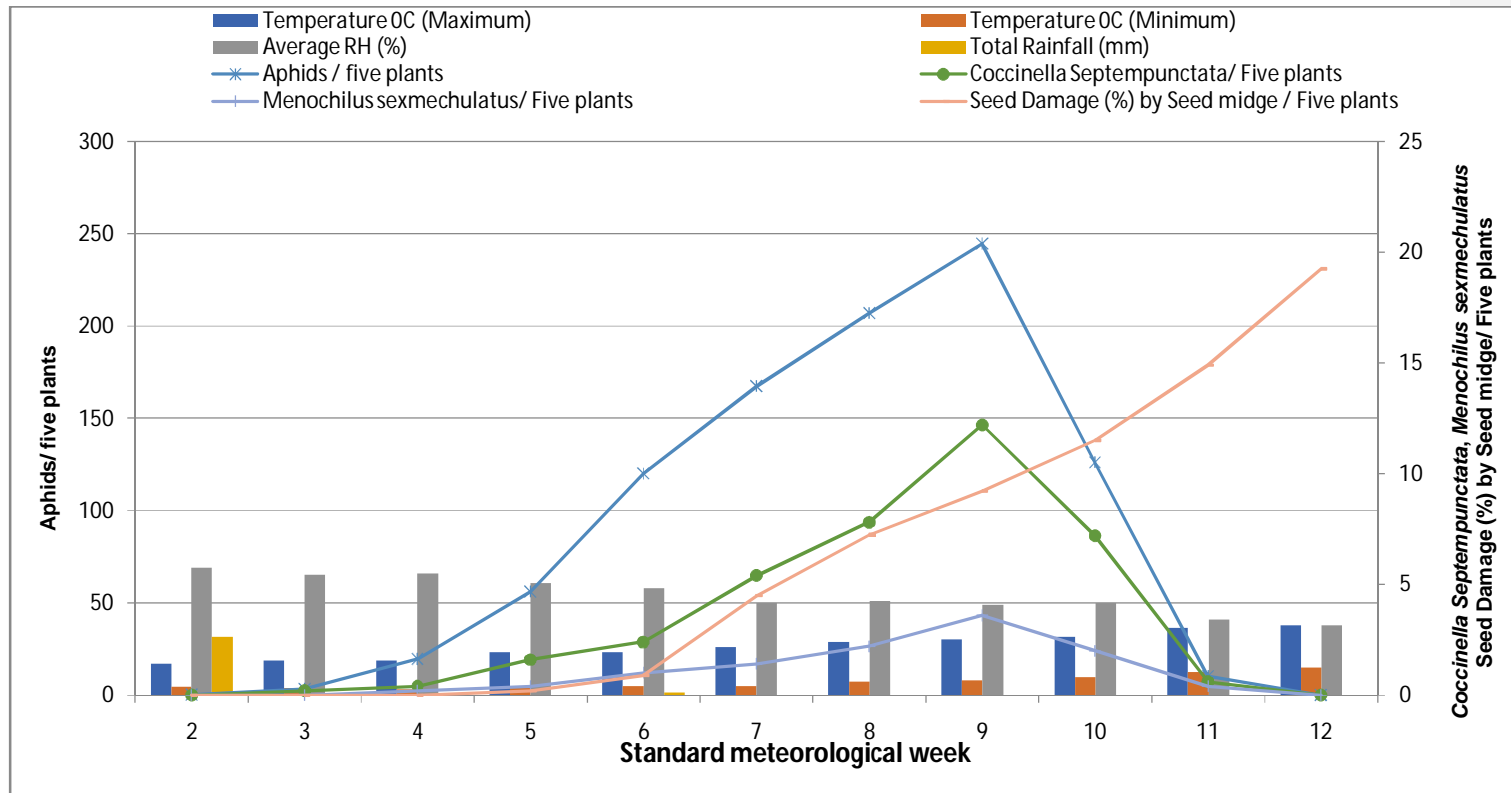


Fig.1 Seasonal abundance of major insect pests of coriander and their natural enemies in the relation to weather parameters during Rabi, 2021-2022

Table-2 Seasonal abundance of major insect pests of coriander and their natural enemies in the relation to weather parameters during Rabi, 2022-2023

S. No.	SMW *	Date of observation	Temperature °C (Maximum)	Temperature °C (Minimum)	Average RH (%)	Total Rainfall (mm)	Aphids / five plants	<i>Coccinella Septempunctata</i> /Five plants	<i>Menochiluss exmaculatus</i> / Five Plants	Seed Damage (%) by Seed midge / Five plants
1	2	09.01.2023	24.5	4.9	55	0.0	0.2	0.0	0.0	-
2	3	16.01.2023	20.1	-0.5	55	0.0	4.2	0.2	0.0	-
3	4	23.01.2023	21.3	3.6	61	0.0	22.0	0.4	0.2	-
4	5	30.01.2023	22.0	5.2	69	17.0	60.4	1.8	0.6	0.25
5	6	06.02.2023	26.9	6.9	56	0.0	123.0	2.8	1.2	2.45
6	7	13.02.2023	28.4	5.8	51	0.0	176.0	5.4	1.6	5.20
7	8	20.02.2023	31.9	9.8	49	0.0	228.8	8.2	2.4	8.20
8	9	27.02.2023	32.1	12	49	0.0	254.0	14.8	3.8	10.65
9	10	06.03.2023	30.7	11.3	53	3.0	138.2	7.6	1.6	12.60
10	11	13.03.2023	32.8	13.8	55	1.5	12.0	0.6	0.4	15.75
11	12	20.03.2023	28.5	13.1	62	3.0	-	-	-	17.00

Comment [mj5]: Delete this column as it is unnecessary

*Standard Meteorological Week

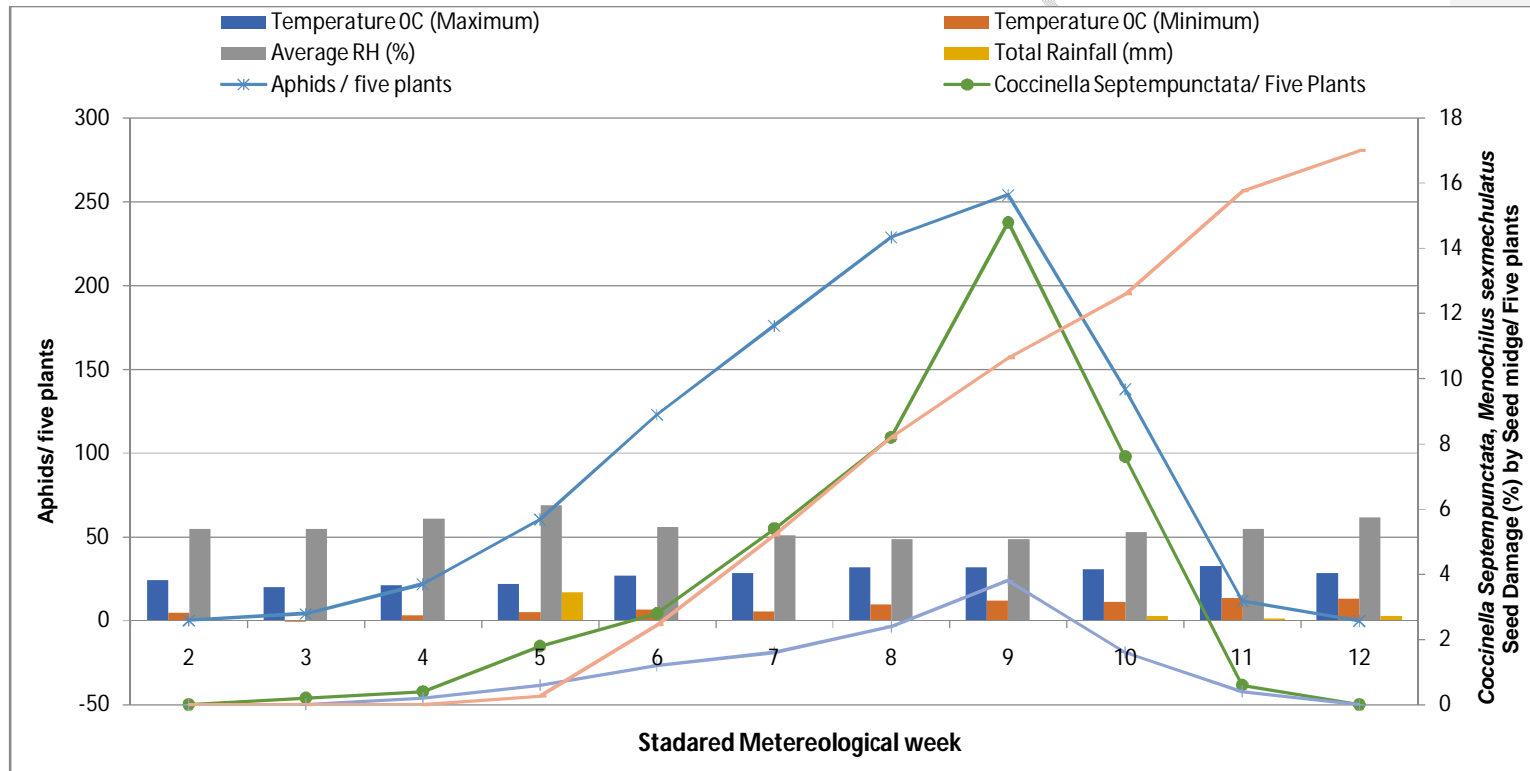


Fig.2 Seasonal abundance of major insect pests of coriander and their natural enemies in the relation to weather parameters during Rabi, 2022-2023

Table-3 Correlation coefficient (r) between population of major insect pests, predators and abiotic factors during Rabi, 2021-22

Particular	Correlation coefficient (r)			
	Insect pests		Predators	
	Aphid	Seed damage (%) By Seed midge	<i>Coccinella septempunctata</i>	<i>Menochilussexmaculatus</i>
Maximum temperature	0.45(NS)	0.99**	0.53(NS)	0.56(NS)
Minimum temperature	0.20(NS)	0.98**	0.34(NS)	0.39(NS)
Average RH	-0.53(NS)	-0.95**	-0.56(NS)	-0.58(NS)
Total rainfall	-0.37(NS)	-0.46(NS)	-0.33(NS)	-0.34(NS)
<i>Coccinella septempunctata</i>	0.94**	0.22(NS)	-	-
<i>Menochilussexmaculatus</i>	0.94**	0.25(NS)	-	-

Comment [mj6]: Write scientific name

**Significant at 1 % level, NS- non significant

Table-4 Correlation coefficient (r) between population of major insect pests, predators and abiotic factors during Rabi, 2022-23

Particular	Correlation coefficient (r)			
	Insect pests		Predators	
	Aphid	Seed damage (%) By Seed midge	<i>Coccinella septempunctata</i>	<i>Menochilussexmaculatus</i>
Maximum temperature (°C)	0.65*	0.71*	0.66*	0.69*
Minimum temperature (°C)	0.49(NS)	0.95**	0.57(NS)	0.58(NS)
Average RH (%)	-0.60(NS)	-0.24(NS)	-0.60(NS)	-0.60(NS)
Total rainfall	-0.16(NS)	-0.42(NS)	-0.15(NS)	-0.17(NS)

Comment [mj7]: Use scientific name

<i>Coccinella septempunctata</i>	0.92**	0.25(NS)	-	-
<i>Menochilussexmaculatus</i>	0.96**	0.17(NS)	-	-

*Significant at 5% level, **Significant at 1% level, NS- non significant

UNDER PEER REVIEW